



MONTHLY MEMBERSHIP PROGRESS REPORT

District 5M 10

Results as of: 05/31/2019

GMT: GORDON ZIEGLER

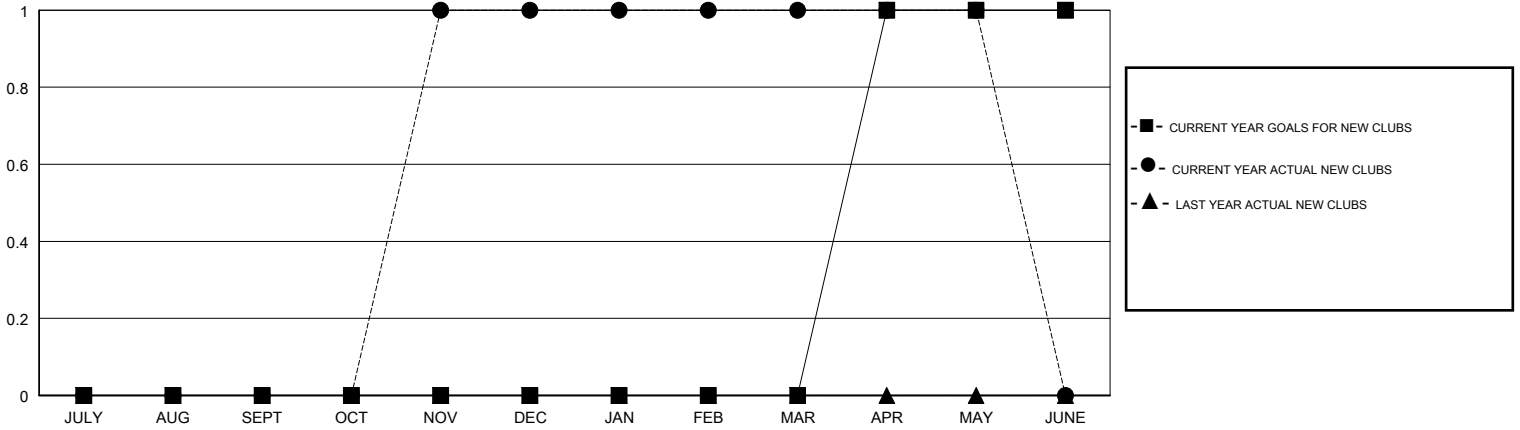
LOCATION MINNESOTA

GMT CA

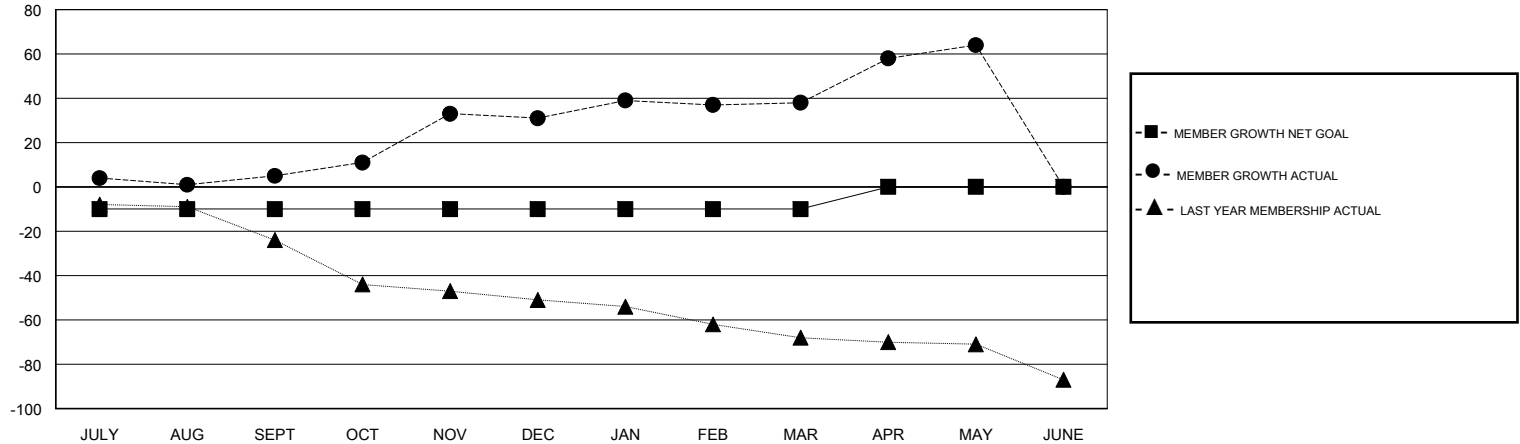
Clubs			
RESULTS FOR 2018-2019			
QUARTER	NEW CLUB GOAL	NEW CLUBS	DROPPED CLUBS
JULY/AUG/SEPT	0	0	0
OCT/NOV/DEC	0	1	0
JAN/FEB/MAR	0	0	0
APR/MAY/JUNE	1	0	0

Members			
RESULTS FOR 2018-2019			
QUARTER	MEMBER GROWTH NET GOAL	MEMBER GROWTH ACTUAL	DROPPED MEMBERS ACTUAL (including transfers)
JULY/AUG/SEPT	-10	25	18
OCT/NOV/DEC	0	70	44
JAN/FEB/MAR	0	31	22
APR/MAY/JUNE	10	43	17

GOALS AND ACTUAL NEW CLUBS CUMULATIVE



GOALS AND ACTUAL MEMBERS CUMULATIVE



DROPPED CLUBS: 0	32 CLUBS OF 45 ADDED 1 OR MORE NEW MEMBERS	<u>GENDER DISTRIBUTION</u> MALE 722 (57.48%) FEMALE 534 (42.52%) Women Percentage Fiscal Year Goal: 50%
<u>DROPPED MEMBERS</u> DECEASED 14 CLUB CANCELLED 0 OTHER 87 TOTAL 101	CLICK HERE FOR CUMULATIVE MEMBERSHIP DATA	TOTAL FAMILY UNIT MEMBERS 308 FAMILY MEMBERS PAYING HALF DUES 156